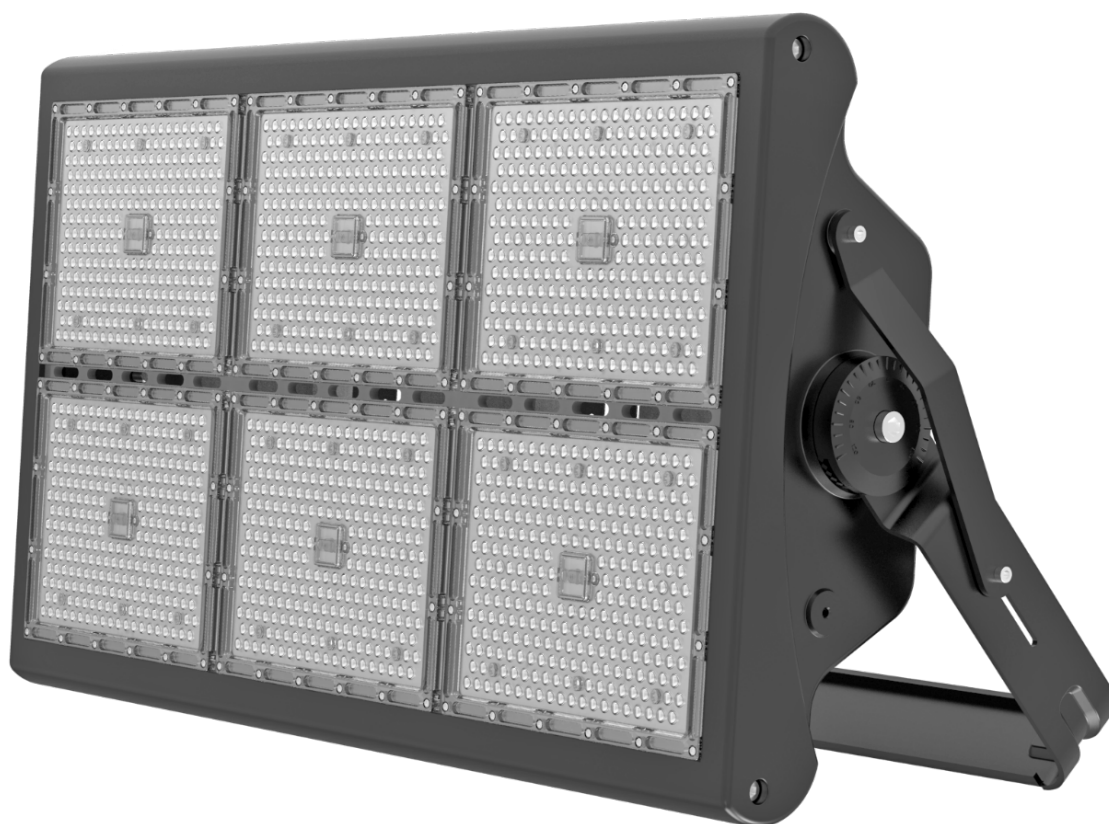
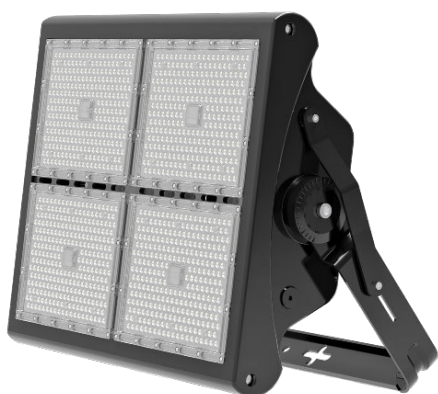


Stealth Flood 4

500W~1500W

120LM/W





Overview

The LTC Stealth Flood 4 uses LUMILEDS® LUXEON 3030 LEDs, providing excellent lumen output, long-lasting stability, and splendid sight in your space.

Sturdy design & unique light distribution delivering both quality lighting with energy efficiency & longevity

5 year warranty

Additional Options

Other RAL colours, CRI, CCT and beam angle available on request. Additional custom options such as 415C, 2 phase input, remote driver , flexible cable (main input) at various length (10m,15m, 20 m , 30m etc)

LED



Illumination grade LED light source.

LED DRIVER



High-end programmable Mean Well or Inventronics Series LED driver, with integrall dimming function and 4KV surge protection, provides excellent performance and lifespan.

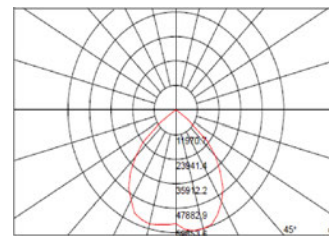
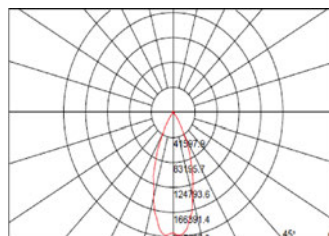
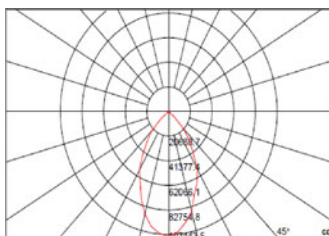
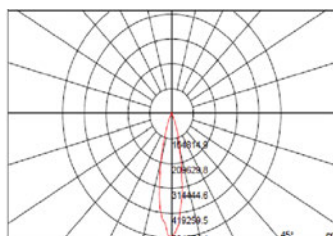


HEAT RADIATOR

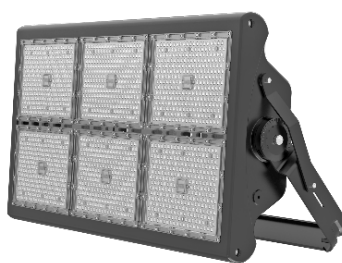
Unique thermal design,stable product performance.



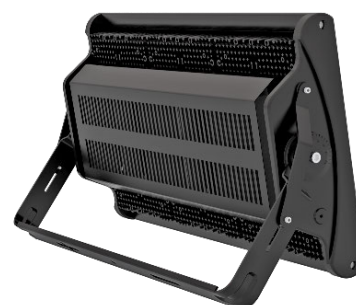
Average beam angle(50%) : 10° 25° 45° 60° 90° (optional)



Excellent thermal management system and heat radiation enable LEDs to consistently work cooler, providing significant boosts to lifetime and efficacy



Unique high efficiency modules

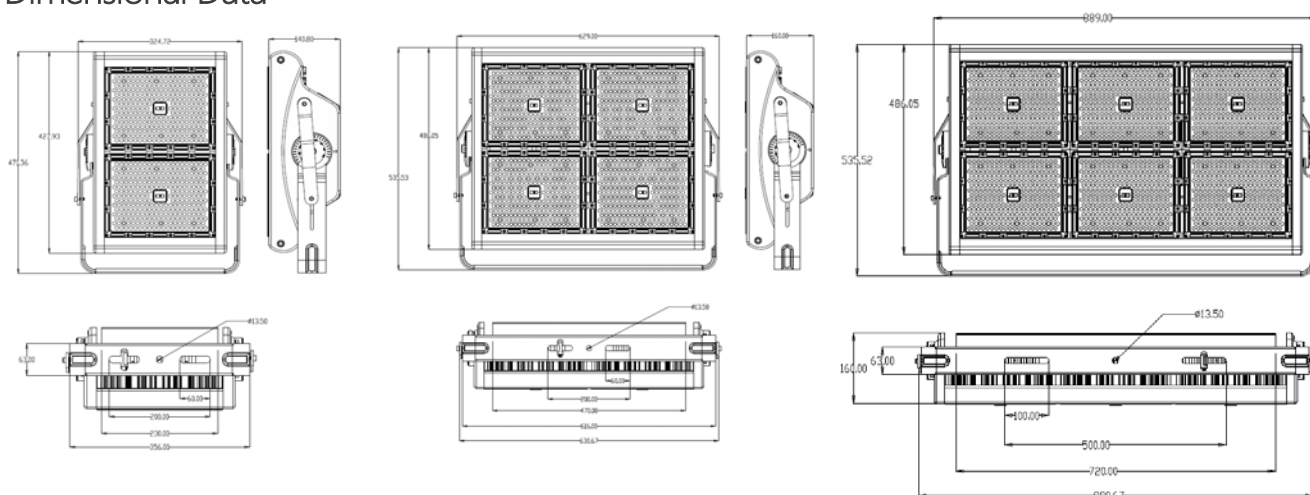


Highly efficient, constant current driver, and wide voltage input, can work in the place of unstable voltage

| Product | LYQCD-500W | LYQCD-1000W | LYQCD-1500W |
|----------------------------|--|-------------|-------------|
| Item Code (for 25°) | 112097 | 112098 | 111080 |
| Nominal Wattage | 500W | 1000W | 1500W |
| LED Qty (PCS) | 560 | 1120 | 1680 |
| Input Voltage | AC90-305V 50 /60Hz | | |
| LED Brand | Lumileds 3030 | | |
| Driver Brand | Mean Well | | |
| Max. Current @ 115V | 4.1A | 8.3A | 12.4A |
| Max. Current@230V | 2.1A | 4.1A | 6.2A |
| Max. Current@277V | 1.7A | 3.4A | 5.1A |
| Operating Temperature | -40 °C to +50 °C | | |
| Power Factor(PF) | >0.95 | | |
| THD | <20% | | |
| Leakage Current | <5MA | | |
| Surge Protection | 4KV | | |
| Lumen Output (+/- 5%) | 60000 lm | 120000 lm | 180000lm |
| Luminaire Efficacy (+/-5%) | 120lm /w | | |
| Luminaire Classification | Class I | | |
| Light Distribution Type | Symmetrical | | |
| Beam Angle | 10° 25° 45° 60° 90° Optional | | |
| Ra | >80 | | |
| CCT | 3000K (Warm White), 4000K (Nature White), 5000K (Pure White), 5700K (Cool White) | | |
| Rating | IP66 | | |
| Impact Rating | IK08 | | |
| Mounting Options | Bracket installation/Hanging ring installation/Hanging rod installation | | |
| Spigot Size | / | | |
| Accessories (Optional) | / | | |
| Cable Gland | PG11 | | |
| Cable Ø Entry Range | Ø5-10mm cable | | |
| Body Material | Aluminium | | |
| Shell Color | Black or other RAL colors available on request | | |
| Optics/Lens Cover | Polycarbonate | | |
| Lumen Maintenance | > 60,000 hours-L ₇₀ at 25 °C | | |
| Certifications | CE、ROHS | | |
| Packaging Type | 1 unit /CTN. | | |

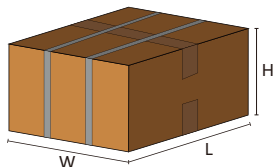
The tolerance range of test data above is ±6% , but normally warm white is ±8%.

Dimensional Data



| Nominal No. | LYQCD-500W | LYQCD-1000W | LYQCD-1500W |
|-------------------|---------------|---------------|---------------|
| Product Size (mm) | 325*472*160mm | 629*536*160mm | 890*536*160mm |
| N.W | 15kg | 25.8kg | 36.6Kg |

Packaging Data



| Model No. | Power | Product Size(mm) | Carton Size (mm) | Q'ty/Ctn | N.W | G.W. |
|-------------|-------|------------------|------------------|----------|--------|------|
| LYQCD-500W | 500W | 325*472*160mm | 380*530*220mm | 1 | 15kg | 16kg |
| LYQCD-1000W | 1000W | 629*536*160mm | 690*600*220mm | 1 | 25.8kg | 28kg |
| LYQCD-1500W | 1500W | 890*536*160mm | 950*600*220mm | 1 | 36.6Kg | 39kg |

Application

High Pole square lighting, stadium lighting, large outdoor stadium lighting, harbour, wharfs, tower cranes, open air markets



After-Sale Service

The LTC warranty does not cover: Products that are subjected to misuse, neglect, negligence or accidental damage or use contrary to any written installation or maintenance guides issued by LTC or available on LTC's website. Installed by any person other than a qualified tradespersons. Products that are subjected to (momentarily or continuously) abnormal physical stress, abnormal environmental conditions, exposure to foreign materials, exposure to chemical attack, exposure to excessive humidity, vibration, impact, extreme temperature, subject to electrical line noise, electric surge, voltage outside range etc. Products that are reconstructed, repaired or altered by persons other than LTC or an authorized representative Any third-party manufactured products attached to the Product, inserted in the Product or added to the Product network such as sensors, detectors, batteries or communication devices (such products are covered by the applicable manufacturer warranty). Any security breach or hacking of the Product or lighting system through manual, wired / wireless intrusion etc. The Australian Consumer Law requires the inclusion of the following statement with the LTC Warranty in any Consumer Contract Our goods come with guarantees that cannot be excluded under the Australian Consumer Law. You are entitled to a replacement or refund for a major failure and for compensation for any other reasonably foreseeable loss or damage. You are also entitled to have the goods repaired or replaced if the goods fail to be of acceptable quality and the failure does not amount to a major failure.

Should any of our products not perform to your satisfaction or to specification please contact us on 1300 832 372

Contact Us
LTC Head Office:
Sales: 1300 832 372
Email: sales@lighttc.com.au
Admin: 1300 832 372
Email: admin@lighttc.com.au



Address:
251 Rawson Street, Auburn, NSW, 2144,
Australia
Website: www.lighttc.com.au