

## STEALTH FLOOD 2

### Stadium Lighting



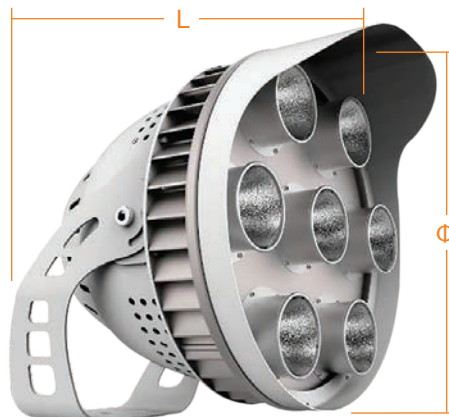
### Product Overview

Stealth Flood with sturdy design & unique light distribution delivers both quality lighting with energy efficiency & longevity

- Light output: Up to 93,600Lm
- IP65 Rating
- Thermal rating: -40 °C to +50 °C
- Integral LED driver
- Built in 10kV surge protection

### Product Applications

- General Flood Light Applications
- Various Sport Fields
- Stadiums
- Sea Port, Rail Yard, Ferries etc
- Various Public & Commercial Spaces
- And Many More External Lighting Applications



- 400W  
Φ330\*380mm
- 480W  
Φ460\*380mm
- 720W  
Φ460\*400mm



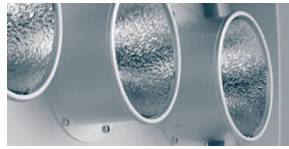


## Main Features

Product Name:	Stealth Flood 2
AC Input:	240V 50Hz
Light Output:	93,600Lm for 720W
CRI:	80 (70 optional)
CCT Range:	5000K (3000K, 4000K, 5700K optional)
Beam Angle:	60° (15°, 23°, 38°, 45° optional)
Electronic Driver:	Meanwell
LED:	Citizen-COBs



Adjustable angle



Efficient COB LEDs



Anti-dazzle visor



High grade aluminium housing

## STEALTH FLOOD 2 STADIUM LIGHTS

Stealth Flood is a one to one replacement for existing HID flood light with up to 55% energy savings.



## Contact Us

### LTC Head Office:

**Sales:** 1300 832 372

**Email:** sales@lighttc.com.au

**Admin:** 1300 832 372

**Email:** admin@lighttc.com.au

**Website:** www.lighttc.com.au



### Address:

251 Rawson Street,  
Auburn, NSW. 2144. Australia.