

**LED TUBE ROD**  
Fluorescent tube  
Retrofit



 **Product Overview**

Energy efficient, reliable & cost effective LED tube replacement

- Luminous efficacy of up to 160 lm/W
- Beam angle 120°
- Size(mm) :  $\Phi$ 26
- CRI>80 or CRI>90
- Integral led driver
- High grade Aluminum housing

 **Product Applications**

- Office
- Health Care
- Educational Institutions
- Shop & Retail
- Architectural
- Commercial
- And many more lighting applications

- Easy and quick replacement to LED
- Standard 74,000 hours life time
- Up to 3 years warranty\*
- Available in various length (2ft, 3ft, 4ft & 5 ft)
- Recommended Installation Height :2-10 meter
- Frosted diffuser option available



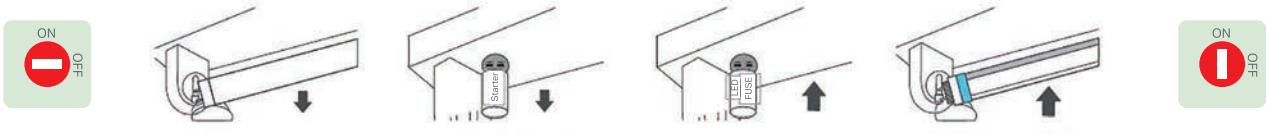


## Main Features

Product Name:	LTC Tube Rod
AC Input:	220- 240V, 50/60 Hz
Light Output:	1430Lm (2ft), 2210 Lm (3ft), 2600Lm (4ft), 3900Lm (5ft)
CRI Options:	80 / 90 / 95
CCT Range:	WW(3000K) NW(4000K) DW(5000K) CW(6500K)
Light Efficiency :	130Lm/W, 160Lm/W
Beam Angle :	120 °
Temperature:	Storage:-40~+85°C, Operating:-20~+40°C



## Easy to Install



## LTC Tube Rod Taking a closer look.

This next generation T8 LED tube rod with high energy efficiency is a reliable and safe replacement for existing fluorescent tubes



## Contact Us

LTC Head Office:

**Sales:** 1300 832 372

**Email:** sales@lighttc.com.au

**Admin:** 1300 832 372

**Email:** admin@lighttc.com.au

**Website:** www.lighttc.com.au



**Address:**

251 Rawson Street,  
Auburn, NSW. 2144. Australia.