

IMC Light
Industrial Mining Conveyor Light

35W~59W



INVENTRONICS  LUMILEDS





Overview

The LTC IMC Light uses Lumiled LEDs, providing excellent lumen output, and long-lasting stability.

The sturdy design & unique light distribution deliver high quality lighting with energy efficiency & longevity.

3-year warranty (5-year extended warranty available)

Additional Options

Customisable as per project requirement. Microwave motion sensor, daylight sensor and other custom smart systems available as per project requirement.

LED

Illumination grade LED light source.



LED DRIVER



High-end programmable Inventronics or Tridonic (emergency) series LED driver, with 20KV surge protection provides excellent performance and lifespan.

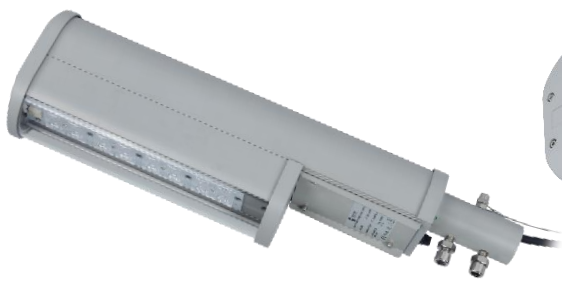
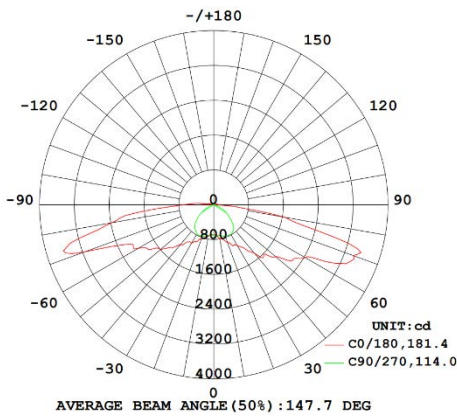


SLOPED EDGES

Clean and smooth surface housing minimises dust accumulation.



Average beam angle(50%) :



Corrosion, vibration, and chemical resistant



Anodised and powder coated for extra life

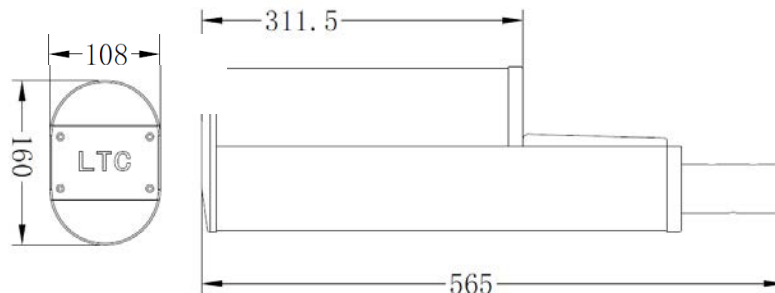


No stroboscopic flickering

Product	IMC 35W	IMC 39W (Emergency)	IMC 55W	IMC 59W (Emergency)
Item Code	112083	112084	112026	112027
Nominal Wattage	35W	39W (Emergency)	55W	59W (Emergency)
Input Voltage	240V AC 50Hz/60Hz			
Power Factor	>0.9			
LED Brand	Lumileds 5050			
Driver Brand	Inventronics or Tridonic (emergency driver)			
Max. Current@240V	0.16A	0.17A	0.24A	0.26A
Operating Temperature Range	50 ° C	40 ° C	50 ° C	40 ° C
Leakage Current	0.7mA @240V AC			
Battery Type	/	TridonicNiCd Accus 4.5 Ah	/	Tridonic NiCd Accus 4.5 Ah
Charge Time	/	24 hrs	/	24hrs
EM Discharge Time Type	/	3 hrs	/	3 hrs
Emergency Classification	/	C0 /D12.5 , C90/ D80	/	C0 /D12.5 , C90/ D80
Surge Protection	20KV			
Lumen Output (+/-5%)	4235lm	4719lm	6325lm	6785lm
Luminaire Efficacy (+/-5%)	121 Lm/W	121 Lm/W (Mains) 134 Lm/W (Emergency)	115Lm/W	115Lm/W (Mains) 134 Lm/W (Emergency)
Luminaire Classification	Class I			
Light Distribution Type	Type I (Type II, Type III, & Type IV Optional)			
CRI	70 (80 optional)			
CCT	5000K (Amber, 2700K-6500K Optional)			
IP Rating	IP66			
Impact Rating	IK10			
Mounting Options	Pole mounted with spigot			
Spigot Size	34 mm (42 mm optional)			
Accessories	Safety lanyard (optional)			
Cable Gland	M20, Nylon 66			
Cable Ø Entry Range	7 – 13 mm			
Body Material	Anodised and powder coated high grade Aluminium			
Finish	Grey			
Optics/Lens Cover	Polycarbonate			
Projected Rated Life (LED)	LM80/TM21 >60KHrs			
Certifications	Global Mark, RCM, ISO9001:2015,			
Packaging Type	2pcs/carton			

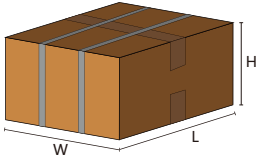
The tolerance range of test data above is ±6% , but normally warm white is ±8%.

Dimensional Data



Product Size (mm)	160*565*108mm	160*565*108mm	160*565*108mm	160*565*108mm
N.W (with driver)	Approx. 5kg	Approx. 5kg	Approx. 5kg	Approx. 5kg

Packing Data



Wattage	Product Size(mm)	Carton Size (mm)	Q'ty/Ctn	N.W	G.W.
35W	160*565*108mm	610*275*215mm	2	Approx. 5kg	11kg
39W	160*565*108mm	610*275*215mm	2	Approx. 5kg	11kg
55W	160*565*108mm	610*275*215mm	2	Approx. 5kg	11kg
59W	160*565*108mm	610*275*215mm	2	Approx. 5kg	11kg

Applications

Mining conveyor gantries and walkways, wharf and port facilities, material handling machines, coal plants, access stairways, sewerage treatment plants, general security lighting, heavy industries, pedestrian pathways, marine applications, street lighting, and area lighting.



After-Sale Service

The LTC warranty does not cover: Products that are subjected to misuse, neglect, negligence or accidental damage or use contrary to any written installation or maintenance guides issued by LTC or available on LTC's website. Installed by any person other than a qualified tradespersons. Products that are subjected to (momentarily or continuously) abnormal physical stress, abnormal environmental conditions, exposure to foreign materials, exposure to chemical attack, exposure to excessive humidity, vibration, impact, extreme temperature, subject to electrical line noise, electric surge, voltage outside range etc. Products that are reconstructed, repaired or altered by persons other than LTC or an authorized representative Any third-party manufactured products attached to the Product, inserted in the Product or added to the Product network such as sensors, detectors, batteries or communication devices (such products are covered by the applicable manufacturer warranty). Any security breach or hacking of the Product or lighting system through manual, wired / wireless intrusion etc. The Australian Consumer Law requires the inclusion of the following statement with the LTC Warranty in any Consumer Contract Our goods come with guarantees that cannot be excluded under the Australian Consumer Law. You are entitled to a replacement or refund for a major failure and for compensation for any other reasonably foreseeable loss or damage. You are also entitled to have the goods repaired or replaced if the goods fail to be of acceptable quality and the failure does not amount to a major failure.

Should any of our products not perform to your satisfaction or to specification please contact us on 1300 832 372



Contact Us
LTC Head Office:
Sales: 1300 832 372
Email: sales@lighttc.com.au
Admin: 1300 832 372
Email: admin@lighttc.com.au

Address:
251 Rawson Street, Auburn, NSW, 2144,
Australia
Website: www.lighttc.com.au