



**26,000  
FIXTURE  
LUMENS**

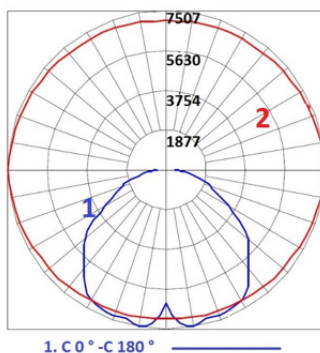
**//MAIN FEATURES**

- **Light output range:** Fixture Lumens 26,000
- **Light Distribution:** Medium Beam
- **IP Rating:** IP65 optical chamber
- **CRI:** 80 CRI
- **Colour Temp:** 4000K and 5000K
- **Body Type:** Aluminium and Zinc Steel white powder coated
- **Lens Type:** Injection moulded acrylic Lens
- **Thermal Rating:** 50°C ambient rated
- **Warranty:** 5 Years
- **Australian Made:** Designed and manufactured in Australia

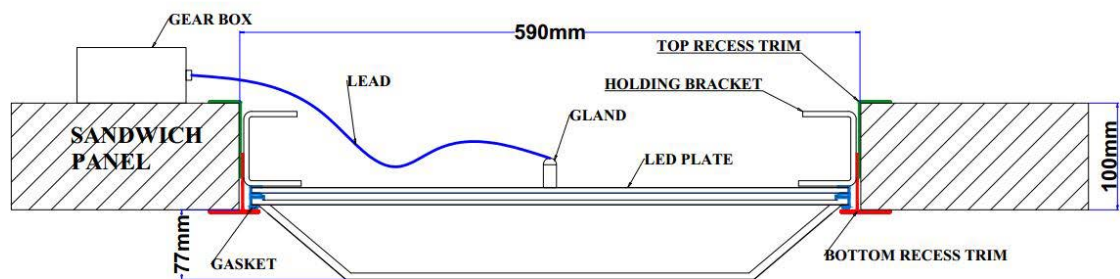
**//DESIGN FEATURES**

- Complies with the requirements for the food processing industry
- PCB / Cree LED designed and manufactured in Australia with a unique combination multi-chip LED surface mount technology
- 80 CRI Multi Chip LED either 3 step MacAdam ellipse
- PCB / multi-chip surface mount LED Heat Sink design and assembly integrating optimum thermal management
- Refractor lens designed to provide maximum glare control, spreading the intensity of the LED light sources over a large surface area
- Acrylic injection moulded refractor lens (non- yellowing)
- Bottom recessing flange aluminium top flange zinc steel. Both powder coated white. Optional 316 stainless steel lower flange for corrosive applications
- Lens and bottom flange assembly IP66 food grade solid white silicone gaskets
- Thermal cut-out and short circuit protection
- Optional microwave movement sensor and 1 to 10 volt dimming
- Remote control gear 50° C ambient rated
- Remote driver powder coated steel box, complete with 2 x flex & plug for 240 volt supply and LED DC supply
- Optional trafficable galvanised steel wire mesh to cover the fitting in the upper ceiling cavity

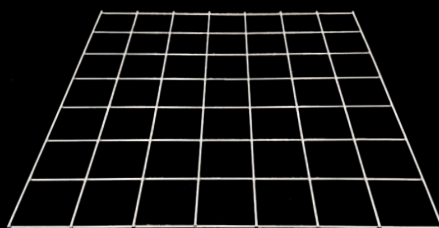
**//PHOTOMETRIC DISTRIBUTION CURVE**



## //FITTING DIMENSIONS



## //FITTING IMAGES



## //HI -GIENE ROUND RECESSED SPECIFICATION TABLE

MODEL	FIXTURE LUMENS	MOUNT*	CT KELVIN	CR I	GEAR Integral or Remote	WATTAGE (W)	LIGHT DISTRIBUTION *	ORDERING CODE
Hi-Giene Round	26,000	R	4	80	R	250	M	HGR26R480R250M
Hi-Giene Round	26,000	R	5	80	R	250	M	HGR26R580R250M

\* Mount Recessed with remote control gear

\* Available Light Distribution M = Medium Light Distribution

**Lighting Technology & Control Pty Ltd**

ABN. 36 607 221 223

Office. (+61) 02 9642 4119

Email. [admin@lighttc.com.au](mailto:admin@lighttc.com.au)

Address. Cnr. Norfolk Road & Wentworth Street, Greenacre, NSW, 2190 Australia.

[www.lighttc.com.au](http://www.lighttc.com.au)

